

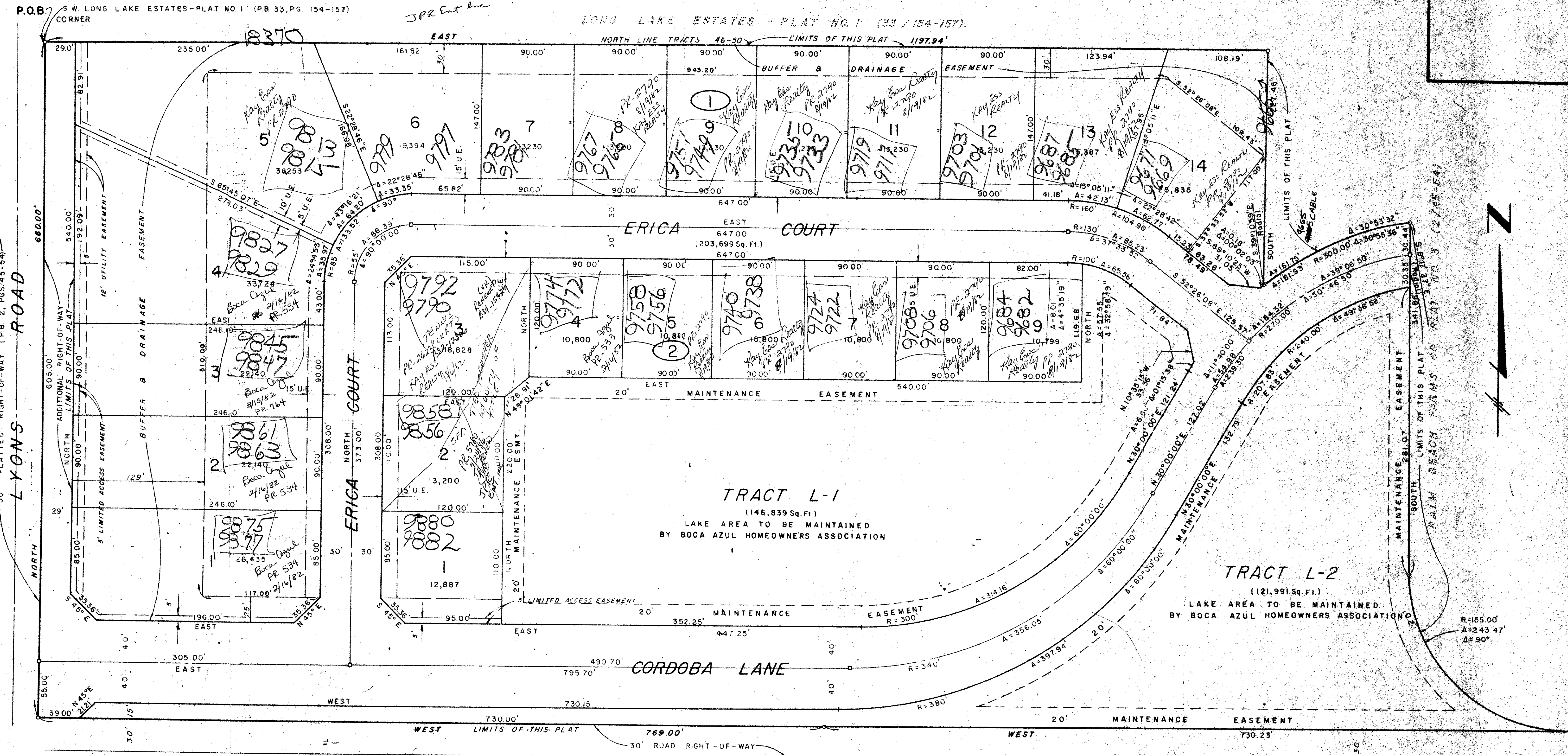
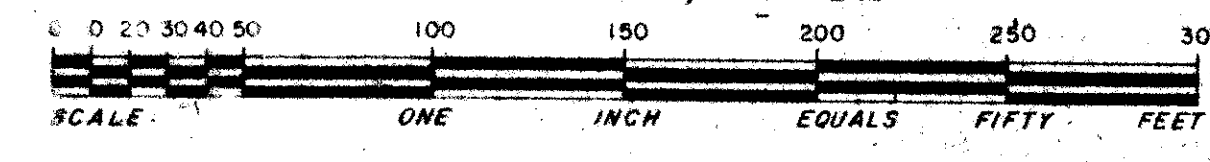
DRAWING NUMBER  
**41-192**

# BOCA AZUL - PHASE ONE

**192**

A PLAT OF A PORTION OF SECTION 5, TWP. 47 S, RGE. 42 E

ALSO BEING A REPLAT OF A PORTION OF BLOCK 72, PALM BEACH FARMS COMPANY PLAT BOOK 2, PAGES 43 THRU 54 INCLUSIVE OF THE PUBLIC RECORDS OF PALM BEACH COUNTY, FLORIDA  
PALM BEACH COUNTY, FLORIDA



PALM BEACH FARMS CO. PLAT NO. 3 (2/45-54)  
L.W.D.D. L-41

- NOTES:
1. ROAD RIGHT-OF-WAYS SHOWN HEREON CONTAIN 204,094 SQ. FT.
  2. BEARINGS SHOWN HEREON ARE RELATED TO THE PLAT OF LONG LAKE ESTATES - PLAT NO. 1 (33/154-157)
  3. O DENOTES P.P.M. PERMANENT REFERENCE MONUMENT
  4. U.E. DENOTES UTILITY EASEMENT

## Boca Azul Ph I

DATE: 11/14/80  
 PREPARED BY:  
**GREGORY B. DARBY**  
**DARBY AND WAY, P.A.**  
 PROFESSIONAL LAND SURVEYORS  
 8571 W. McNAB ROAD TAMARAC, FLORIDA

41/192

**0203-000**

DRAWING NUMBER

DRAWING NUMBER

DRAWING NUMBER

PLAN HOLD CORPORATION • IRVINE, CALIFORNIA

PLAN HOLD CORPORATION • IRVINE, CALIFORNIA

PLAN HOLD CORPORATION • IRVINE, CALIFORNIA